



The Map Of Crested Butte & Mt. Crested Butte



Trail Pass Required (solid red line)
 No Trail Pass Required (dashed red line)
 Unpaved Road (dotted red line)

● Easiest (green circle)
 ■ Intermediate (blue square)
 ◆ Most Difficult (black diamond)

★ Nordic Center
 🐾 Dogs Allowed Pass Required
 🐾 Most Difficult

PLEASE OBEY ALL AVALANCHE CLOSURE SIGNS.

● **BACKCOUNTRY TRAILHEADS**

A - Kebler Pass Trailhead ~ Emphasis on snowmobiling.
B - Slate River Trailhead ~ Open to xc skiing, snowshoeing & non-commercial snowmobiling.
C - Washington Gulch Trailhead ~ Emphasis on xc skiing and snowshoeing. Snowmobiling discouraged.

D - Gothic Road Trailhead ~ Open to xc skiing and snowshoeing. Closed to snowmobiles.
E - Brush Creek Road Trailhead ~ Emphasis xc skiing.

Backcountry trailheads are designated areas where winter maintenance stops and unroomed backcountry travel begins. Use extreme caution when traveling in the backcountry.

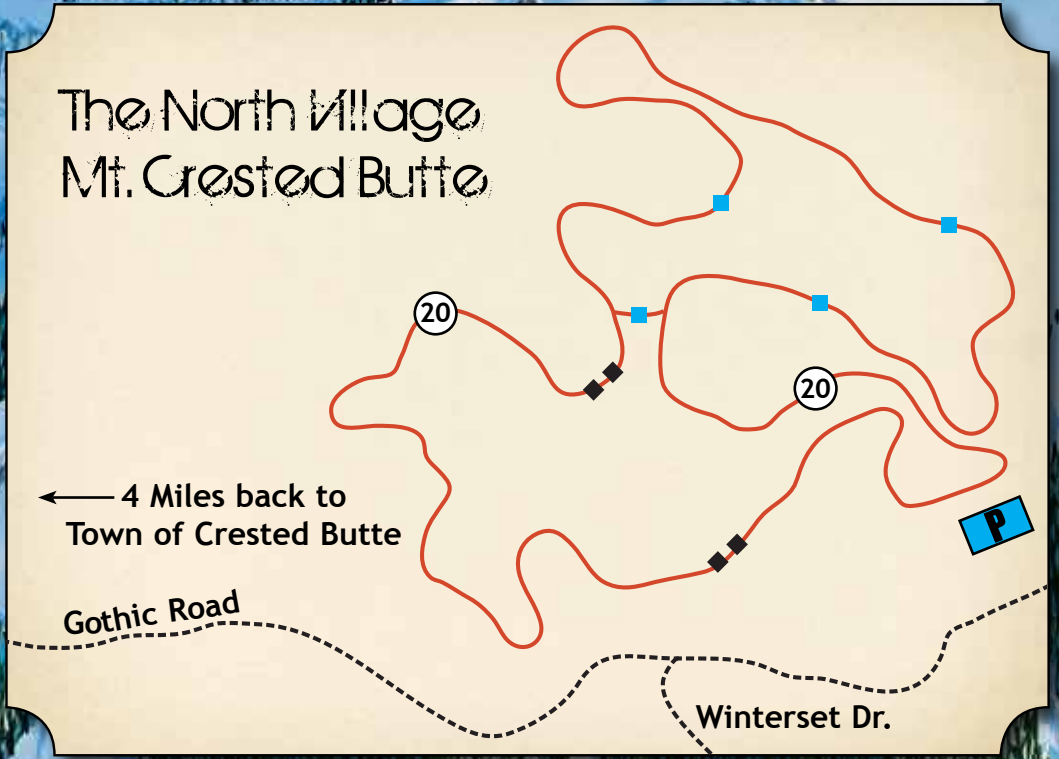
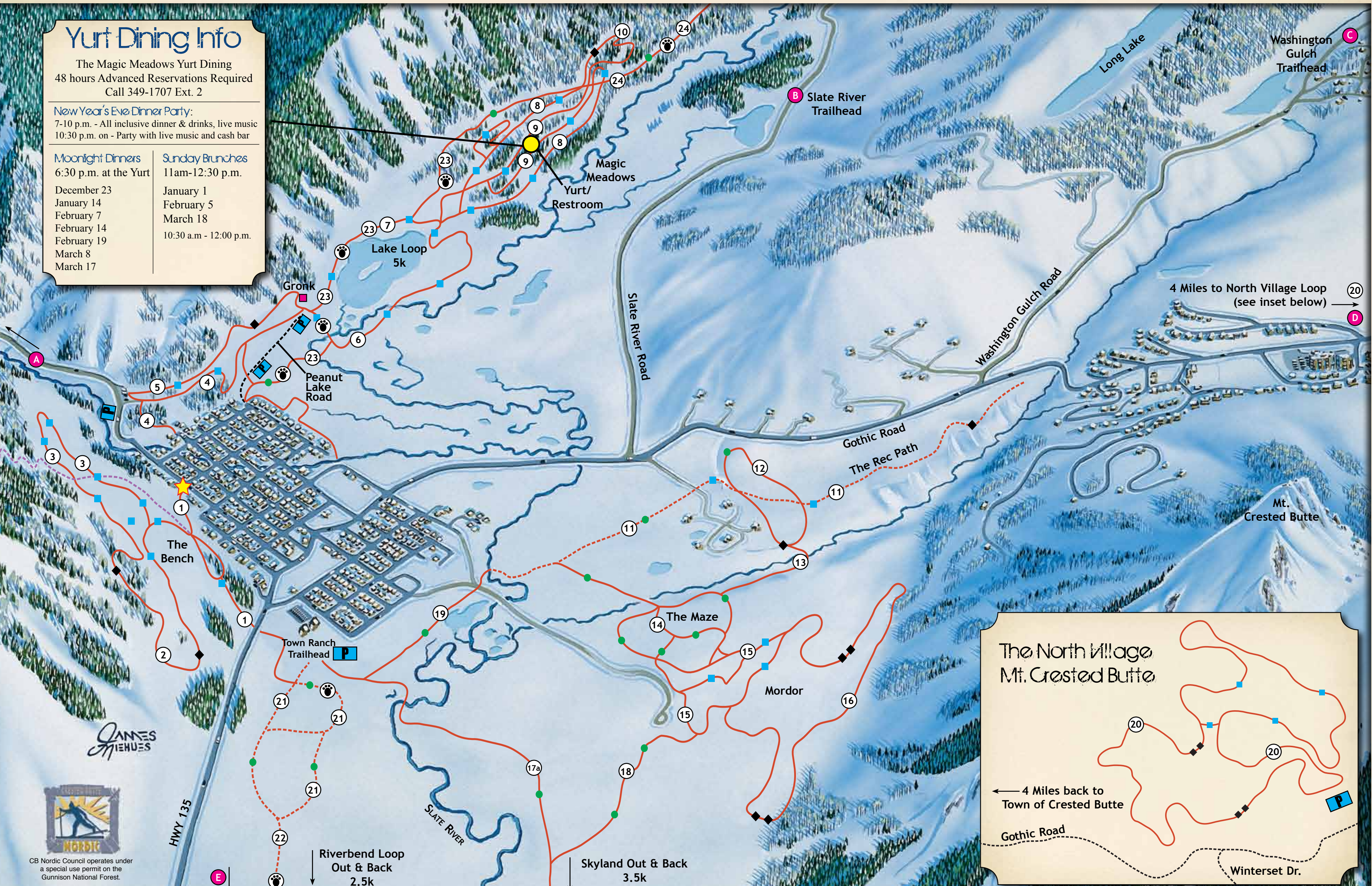
WARNING: This map's purpose is to show approximate trail locations and to show an overview of the area. For precise terrain specifications please refer to a topographical map of the area. This map should not be used as a backcountry travel guide.

Yurt Dining Info

The Magic Meadows Yurt Dining
48 hours Advanced Reservations Required
Call 349-1707 Ext. 2

New Year's Eve Dinner Party:
7-10 p.m. - All inclusive dinner & drinks, live music
10:30 p.m. on - Party with live music and cash bar

Moonlight Dinners	Sunday Brunches
6:30 p.m. at the Yurt	11am-12:30 p.m.
December 23	January 1
January 14	February 5
February 7	March 18
February 14	10:30 a.m. - 12:00 p.m.
February 19	
March 8	
March 17	



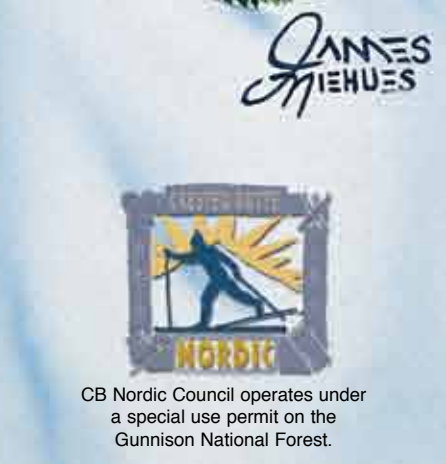
A Breakdown of the Nordic Trails

*Dog passes are required on indicated trails please check at the Nordic Center. Free with trail/season passes.

- TOWN RANCH CONNECTOR, 1.3 K** - A straight, rolling trail that links The Bench and the Town Ranch loop. From Town Ranch skiers can access the other East Side trails while on The Bench side, this trail provides access to the Nordic Center, the Big Mine Loop, and the Electric Loop. Includes one road crossing over Highway 135 near the school.
- ELECTRIC LOOP, 2 K** - The Electric Loop is a short but challenging loop that weaves in and out of the woods, and skirts the base of Gibson's ridge. Both the hills and views will take your breath away.
- BIG MINE LOOP, 2 K** - The Big Mine Loop is a mellow intermediate trail on The Bench above the Nordic Center. Half the trail crosses an open meadow, while the other half cuts through the woods. This is a good trail for skiers that are comfortable on their skis and ready for a couple intermediate hills. The Big Mine Loop is also particularly lovely at night when the valley is quiet and the town of Mt. Crested Butte sits like a cluster of stars in the distance.
- LOWER RED LADY, 1.8 K** - With three trailheads, Lower Red Lady is the main starting point for the West side trails. Whether you're descending through from the Kebler Pass trailhead or climbing from the two trailheads along Peanut Lake Road, this trail provides a good combination of mellow and challenging hills as it crosses an open meadow and ducks into the Woods Walk, an aspen grove above town.
- UPPER RED LADY, 1.4 K** - Upper Red Lady makes a great loop with its other half, Lower Red Lady. Cradled between the lower slopes of Mt. Emmons and the Slate River Valley, this trail provides a few more hills than Lower Red Lady, but the same variety of open and wooded terrain.
- BEAVER TRAIL, 1.8 K** - The Beaver Trail is a mostly flat trail that winds its way through the willows of the Slate River Valley. It's a great trail for warming up before hitting the more challenging Magic Meadows Trails.
- PEANUT LAKE TRAIL, 1.2 K** - A fairly flat, winding trail that takes you cruising out towards the Magic Meadows, and shares part of the Pooch's Paradise trail. Accessible from Pooch's Paradise, the Beaver Trail, the Red Lady trails, and the second Peanut Lake Road trailhead.
- OUTER MAGIC MEADOWS, 2.5 K** - Cruising out the Slate River valley, past Pooch's Paradise and the Beaver Trail, tall ridges rise on either side of you and the trail winds and climbs into the woods. Welcome to the Magic Meadows. What is the busy Lower Loop in the summer is transformed into a quiet refuge in winter. Keep an eye out for fox, snowshoe hare, and other woodland critters, who are likely to be your only company early in the day. Connect the Outer trail to the Inner Magic Meadows for a winding intermediate loop, link up with Paradise Park for challenging hills, or check out the further reaches of the Slate River Valley on our newest trail, Mike's Mile.
- INNER MAGIC MEADOWS, 2.1 K** - Tucked inside the Outer Magic Meadows, the Inner trail provides access to our cozy warming yurt. On its own it's a good easy, short loop before heading back towards town. Add it on to the Outer trail, Paradise Park, or Mike's Mile and you've got bonus kilometers that keep you looping you around for more extensive skiing.
- PARADISE PARK, 1 K** - Some of our hilliest terrain, Paradise Park isn't steep, but you're always headed either up or down. This great little addition to the Outer Magic Meadows offers some terrific gradual climbs and curvy descents that keep experienced skiers working hard and on their toes.
- THE REC PATH, 3.25 K** - This trail offers spectacular views of the Valley. The first part of the Rec Path, nearest to town, is flat, then as you head North the trail starts a steady uphill climb until it approaches Mt. Crested Butte. It connects to Rudy's Rollers, and Washington Gulch towards the Maze. Start to finish, the trail is 3.5 kilometers, so be sure to turn around whenever you are ready.
- RUDY'S ROLLERS, 1.5 K** - Perched on the Rec Path between Crested Butte and Mt. Crested Butte, Rudy's Rollers is a loop at the North end of the Nordic trails on the East side of town. Whether you're hammering up the hills or quick-stepping around the curves on the descent, the Rollers are aptly named for their smooth, rolling terrain. Surrounded by vistas of Whetstone, Red Lady, Snodgrass, and Mt. Crested Butte, this open meadow affords beautiful views in every direction.
- GULCH CONNECTOR, .5 K** - A short, steep stretch of trail that links the Maze to the Rec Path. Take it cautiously down, for it crosses a bridge before sweeping to the right, back down valley.
- THE MAZE, 1.6 K** - The Maze is Crested Butte's best beginner terrain. The small loops make for great technique training, or if you're going for a longer ski, use the Maze for your warm-up and cool-down before heading up to Middle Earth, Mordor, and the Rec Path.
- MIDDLE EARTH, 1.9 K** - Middle Earth puts you right there: in the middle of the ridge between Mt. Crested Butte and town. It's a rolling trail that loops out towards Skyland and back towards the Rec Path. Great for intermediate skiers, or ski just a section of it to practice getting comfortable on hills.
- MORDOR, 3.2 K** - The steepest and hilliest of the trails around Crested Butte, Mordor lives up to its Lord of the Rings name. Mostly long, steady uphill that wind up the lower flanks of Mt. Crested Butte, this travels what is in summer the terrain of the Upper Loop. At its furthest South point it drops steeply into the gulch. Whether going up or down, it's a doozy—be prepared for a short, difficult climb or a harrowing descent till you take a hard right in the willows at the bottom.
- SKYLAND LOOP, 3.5 K** - An easy loop through the golf course around the Skyland residential community.
- SKYLAND CONNECTOR, 0.9 K** - An easy trail that links the Skyland loop to Tony's trail and the rest of the East side trails. Provides Skyland residents ski-in access to town.
- TONY'S, 1.1 K** - This flat, winding trail takes skiers from the Town Ranch trailhead to the Maze, Middle Earth, and Mordor. It's a beautiful path along the Slate river and the Valley that serves double-duty as the beginning of the Elk Mountains Grand Traverse, a backcountry race from CB to Aspen that happens annually at the end of March.
- TEOCALLI CONNECTOR, 0.9 K** - A short, flat trail between the Town Ranch trailhead and the Rec Path.
- THE NORTH VILLAGE, 5 K** - This challenging loop starts from the stables and skis best in a counterclockwise direction. Be ready to get your heart-rate up as you climb and descend this roller coaster trail. The North Village is possible thanks to a partnership with Crested Butte Mountain Resort, but it is a part of the CBNC trail system so a Nordic trail pass is required. Parking is available at the Fantasy Ranch horse stables.
- TOWN RANCH, 3 K** - Dogs need the fresh air and exercise just as much as we do, so we groom the Town Ranch, a mellow loop for our four-legged friends. It's free for people, but dog passes are required, so be sure to stop by the Nordic center before heading to the trailhead by the school.
- RIVERBEND TRAIL, 2 K** - An easy trail that connects the Riverbend houses with the Town Ranch. Provides ski-in access to town from Riverbend.
- POOCH'S PARADISE, 1.8 K** - Our longest dog trail, Pooch's Paradise starts from the first or second Peanut Lake trailheads and heads all the way out to the Magic Meadows and beyond.
- MIKE'S MILE, 2.3 K** - Mike's Mile is an out and back trail that really is an extension of Pooch's. It takes skiers and their four legged friends all the way out the Slate River Valley to Gunsight Bridge. The trail is on an old rail grade left over from Crested Butte's rich mining history.

Yurt Dining Info

Join us at our cozy Magic Meadows Yurt for a unique dining experience. Ski or snowshoe through the moonlit landscape to enjoy one of our gourmet dinners or get the family together for a Sunday morning brunch. Come ring in the New Year with a fine meal and live music at our New Year's Eve Dinner or Party on December 31. You can also reserve the yurt for a special occasion of your own. Make your reservations at least 48 hours in advance by calling 970/349-1707, ext. 3. See Map (opposite) for event dates.



PUBLISHED AND OWNED BY CRESTED BUTTE PUBLISHING & CREATIVE. ALL RIGHTS RESERVED. COPYRIGHT © 2011. FOR DISTRIBUTION, ADVERTISING & PRODUCTION, CONTACT CHRIS HANNA 349-7511. THE MAP'S CONTENTS AND APPEARANCE ARE ALL REGISTERED TRADEMARKS OF CRESTED BUTTE PUBLISHING & CREATIVE.